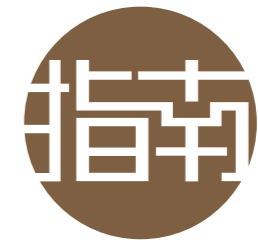




国家会展中心(上海)
National Exhibition and
Convention Center (Shanghai)

NECC GUIDE 国家会展中心(上海)



国家会展中心(上海), 与您共赢发展!
WE ARE SINCERELY LOOKING FORWARD
TO COOPERATING WITH YOU!



官方网站



官方微信



国家会展中心(上海)
National Exhibition and
Convention Center (Shanghai)

国家会展中心(上海)有限责任公司

National Exhibition and Convention Center (Shanghai) Co., Ltd.

NECC (SH) ADD :

中国上海市盈港东路168号 NO.168 East Yinggang Road, Shanghai, China

电话: 021-6700 8888 TEL: +86-21-6700 8888

传真: 021-6700 8877 FAX: +86-21-6700 8877

www.neccsh.com

目录 CATALOG

概 览 OVERVIEW > P01 — P02 <

场 馆 EXHIBITION > P03 — P10 <

会 议 CONFERENCE > P11 — P17 <

办 公 OFFICE > P18 — P23 <

商 业 NECC PLAZA > P24 — P28 <

酒 店 HOTEL > P29 — P34 <

交 通 TRANSPORTATION > P35 — P39 <

概览
OVERVIEW



超大体量 科学设计
综合配套 品质服务

SUPER-LARGE SCALE,
SCIENTIFIC DESIGN,
INTEGRATED SUPPORT
FACILITIES, HIGH-QUALITY SERVICE

国家会展中心(上海)(简称:国家会展中心)由中华人民共和国商务部和上海市人民政府合作共建,国家会展中心(上海)有限责任公司投资建设并运营,作为国家会展项目,她以突破性的设计,完善的功能,立足长三角,服务全中国,面向全世界,推动中国产业结构调整,促进经济发展方式转变,服务中国经济社会平稳健康发展。

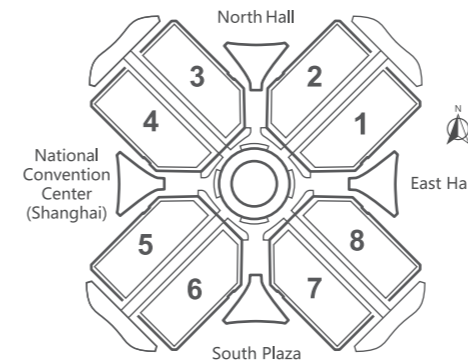
National Exhibition and Convention Center (Shanghai) (short for NECC) is co-built by the Ministry of Commerce of China and Shanghai Municipal Government and invested and operated by National Exhibition and Convention Center (Shanghai) Co., Ltd.. National Exhibition and Convention Center (Shanghai), based in the booming Yangtze River Delta Region, aims to serve China and the world with its cutting-edge design and well-equipped facilities. Its services will help promote China's economic restructuring, expedite the transformation of economic growth patterns, and contribute to the stable and healthy development of the Chinese economy and society.



规模 THE SCALE

国家会展中心总建筑面积155万平方米,其中地上建筑面积135万平方米,是目前世界上面积最大的建筑单体和会展综合体。

NECC is the largest single block building and exhibition complex in the world with a total construction area of 1.55 million square meters, among which 1.35 million square meters are above ground.



辐射范围 THE IMPACT

随着2016年国家会展中心全面投入运营,一大批规模大、影响广、辐射强的国内外展会,将在这里举办;一大批与展会相关的现代服务业,将在这里集聚;一个全新的商业娱乐休闲中心,将在这里崛起。

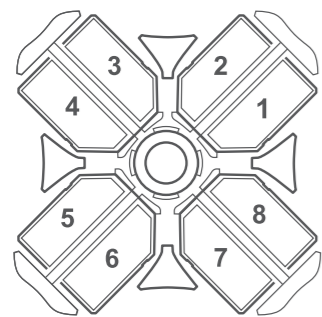
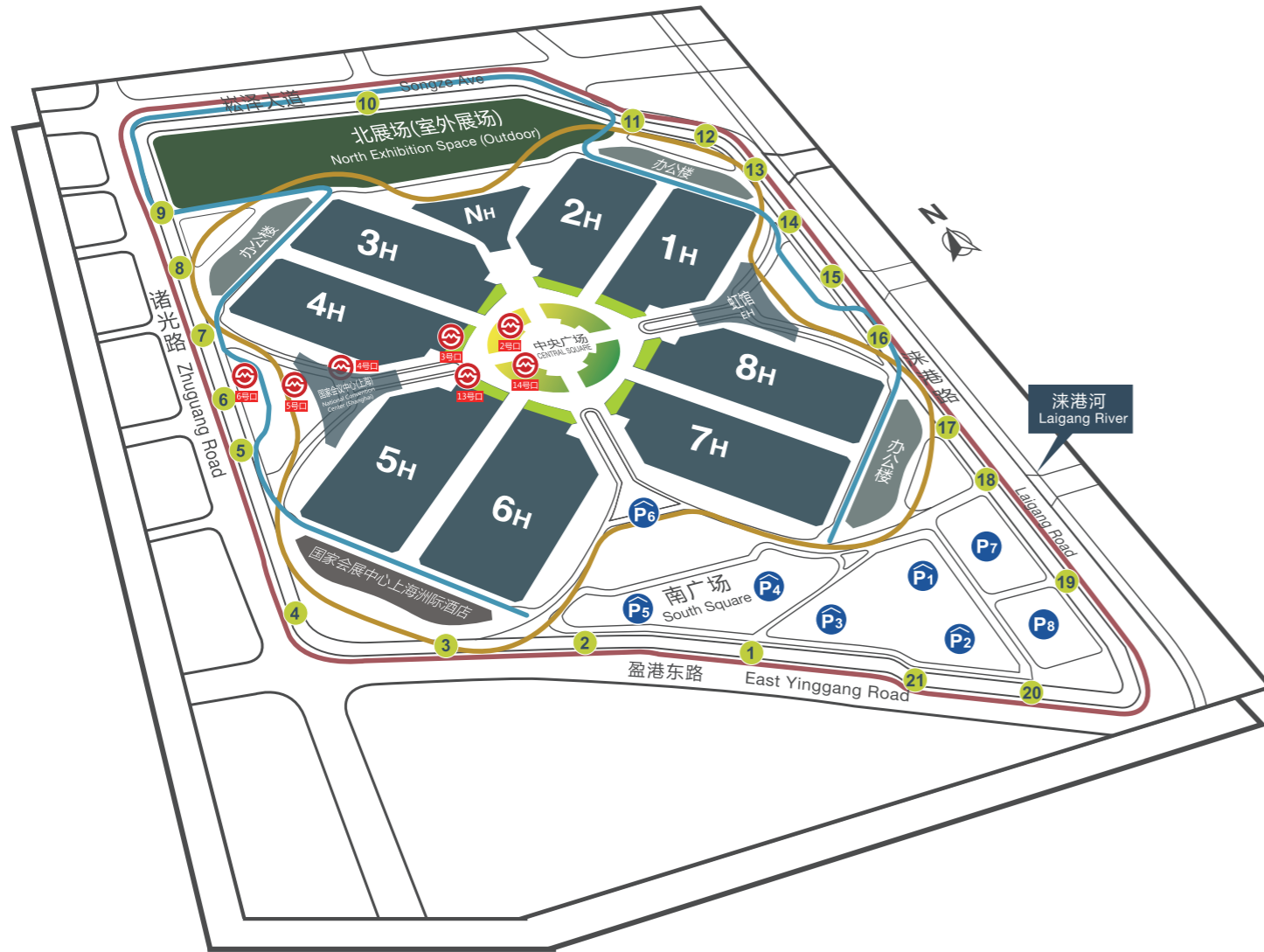
National Exhibition and Convention Center (Shanghai) is slated to open officially in 2016. A multitude of international and domestic exhibitions will be held at the Center to make an immediate impact due to the sheer size and influence of these events. A cluster of services will form to cater to the exhibitions, and the Center will emerge as a new hub for business, recreation and entertainment. National Exhibition and Convention Center (Shanghai) is poised to be an accelerator for Shanghai as the city develops into an international trade center. Furthermore, it will serve as a major enabler for China's "restructuring, redesigning and rebalancing" effort and as a leading platform with limitless potentials for the exchanges between China and the world as well as the mutual success of business development.

国家会展中心必将成为上海国际贸易中心建设的加速器,成为我国“调结构、转方式、促平衡”的大载体,成为国内外交流合作、互利共赢、商机无限的大平台。

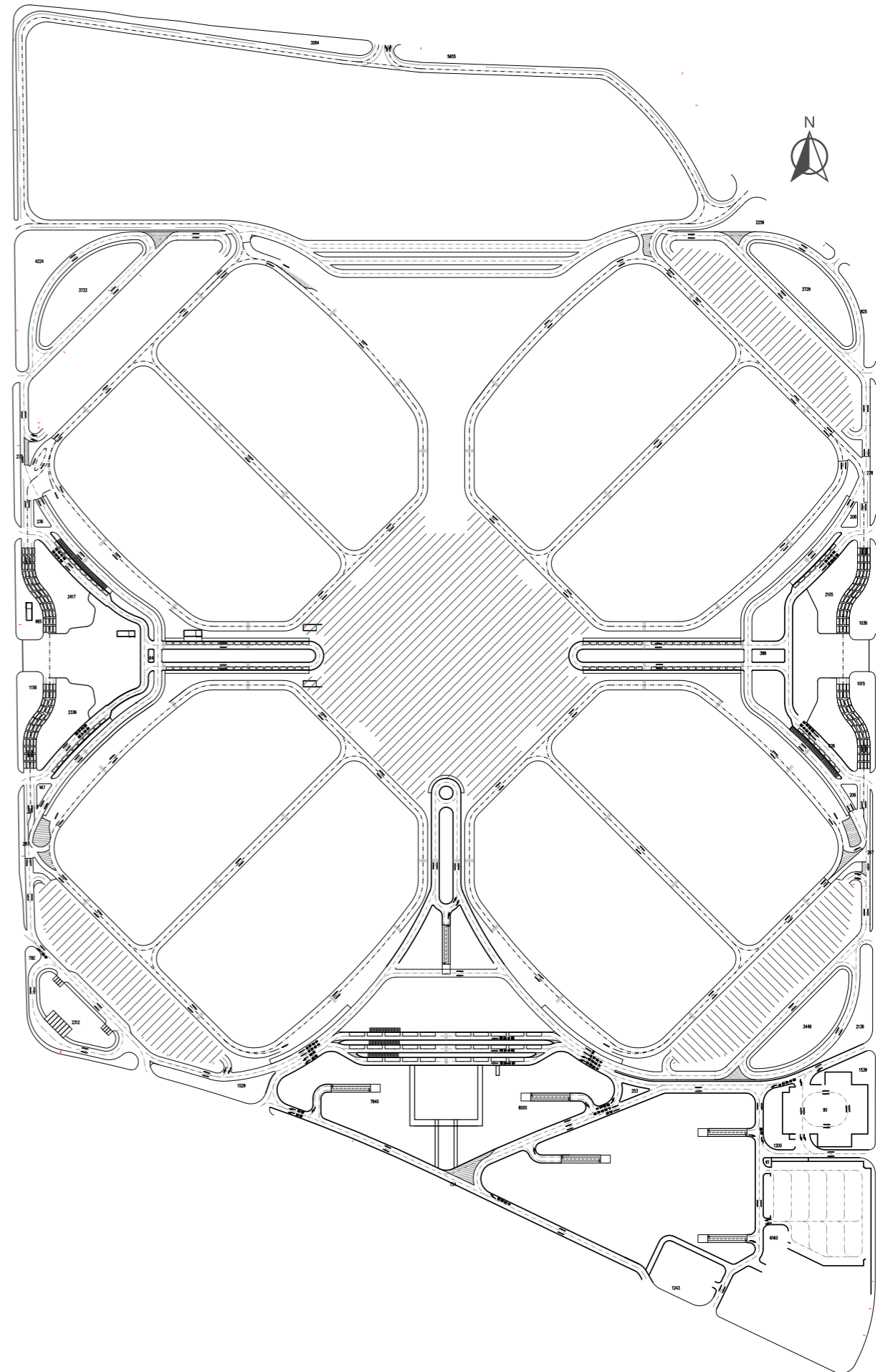


01 场馆
EXHIBITION

总平面图
GENERAL LAYOUT



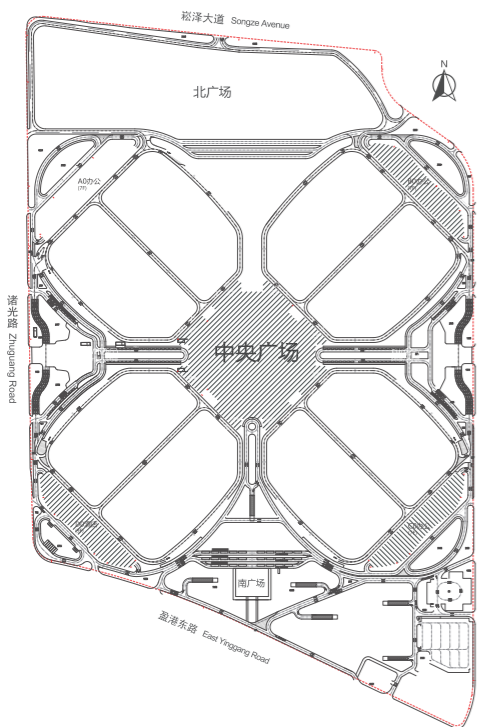
- | | | | |
|----------------------------------|---|---------------------|-------------------|
| — 外环 | — 中环 | — 内环 | |
| ● 展厅 | ● 国家会展中心上海洲际酒店 | ● 办公楼 | ● 配套商业中心 |
| ● 北展场(室外) | ● 室外停车场 | ● 地下停车场 | ● 地铁出入口 |
| ● 出入口 | | | |
| Exhibition Halls | InterContinental Shanghai Hongqiao NECC | Office Building | NECC Plaza |
| 50万m ² | 8.7万m ² | 18.4万m ² | 15万m ² |
| North Exhibition Space (Outdoor) | Outdoor Parking | Underground Parking | Subway Entrance |
| 10万m ² | | | |
| | | | |
| | | | |



展览面积 EXHIBITION AREA

国家会展中心可展览面积近60万平方米，包括近50万平方米室内展厅和10万平方米室外展场。室内展厅由15个单位面积为近3万平方米的大展厅和2个单位面积为1万平方米的小展厅组成，全方位满足大中小型展会对展馆的需求。

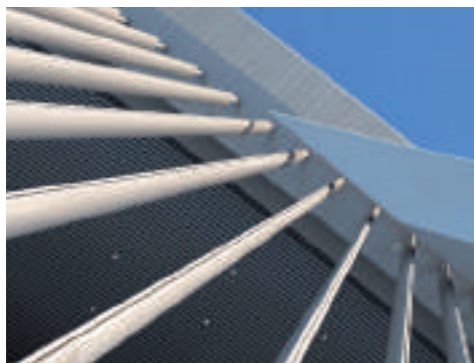
NECC has nearly 600,000 square meters of exhibition area in total, including nearly 500,000 square meters for indoor exhibition halls and 100,000 square meters for outdoor exhibition space. The indoor exhibition area is divided into 15 large halls, each of nearly 30,000 square meters, and 2 smaller halls, each of 10,000 square meters, and together they can meet the space requirement of any exhibition or event.



承重能力 LOAD-BEARING CAPACITY

国家会展中心具有超强承重能力：一层南片的4个双层结构大展厅和北片1个小展厅地面荷载3.5T/m²，二层的5个大展厅和2个小展厅地面荷载1.5T/m²，一层北片的4个大展厅地面荷载更是高达5T/m²。即使是对展厅承重能力要求最高的重型机械国家会展中心亦可轻松负载。

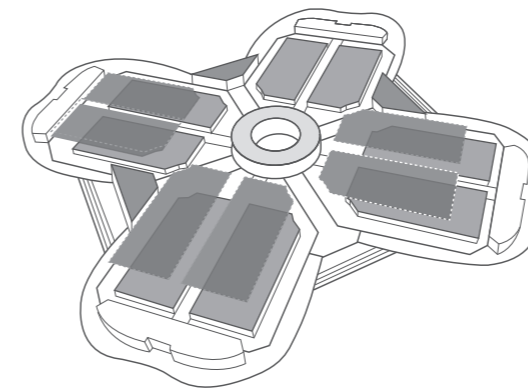
NECC has exceptional load-bearing capacity: the four two-level large exhibition halls on the first floor in the South Section and the smaller hall in the North Section can bear 3.5 T/m²; and the five large halls as well as the two smaller halls on the second floor are capable of bearing 1.5 T/m²; the four large halls on the first floor in the North Section can bear as much as 5 T/m², far exceeding even the load-bearing capacity required by heavy machinery.



展示空间 EXHIBITION SPACE

国家会展中心的单层无柱展厅，净高32米；一层大展厅净高12米，二层大展厅净高17米。阔大的展示空间，可以让展商尽情发挥，实现高品质的形象布展。

The single-level exhibition hall of NECC is column-free with a clear height of 32 meters. Each of the halls on the first floor with a clear height of 12 meters. And each of the halls on the second floor with a clear height of 17 meters. Such large exhibition space will enhance the image of any exhibitor and present unrivaled opportunities to businesses.

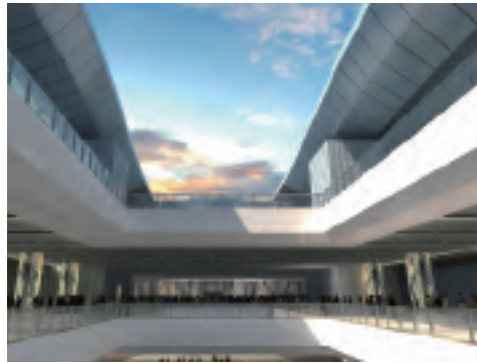


展馆编号 Hall No.	1.1H	1.2H	2.1H	2.2H	3H	4.1H	5.1H/ 8.1H	4.2H/ 5.2H/ 8.2H	6.1H/ 7.1H	6.2H/ 7.2H	NH	EH	WH
展馆标高(m) Height (m)	±0.00	16.00	±0.00	16.00	±0.00	±0.00	±0.00	16.00	±0.00	16.00	±0.00	16.00	16.00
货运入口 (m:宽×高) Freight Entrance (m:Width×Height)	8×4.5				8×6.5								
展馆尺寸(m) Size (m)	269×106										/	/	/
展馆面积(m ²) Area (m ²)	26439	26084	27010	26682	26829	26193	26193	26477	26867	27226	10463	9779	9664
柱网 (mxm) Column Grid (mxm)	9×18/ 27×36	/	9×18/ 27×36	/	/	27×36	27×36	54×36	27×36	54×36	/	/	/
展馆净高(m) Clear Height(m)	12	17	12	17	32	12	12	17	12	17	18	12	12
地面承重(吨/m ²) Ground Bearing Capacity(Ton/m ²)	5	1.5	5	1.5	5	5	3.5	1.5	3.5	1.5	3.5	1.5	1.5
母线容量 (A) Busbar (A)	8×2500	8×1600	8×2500	8×1600	8×3200	8×3200	8×2500	8×1600	8×2500	8×1600	2×1600	2×1600	2×1600
展馆亮度(LX) Luminance (LX)	300												
货运方式 Delivery Method	专用货车道到达各展馆 Special Truck Lane												

会展大道 EXHIBITION AVENUE

国家会展中心由展览场馆、配套商业中心、甲级写字楼和酒店四大部分构成，通过8米标高的会展大道联成一体，可便捷地穿越展馆、商业区、办公楼、酒店等场所。

Facilities at National Exhibition and Convention Center (Shanghai) include exhibition halls, the commercial plaza, the office buildings, and a hotel. These four facilities are linked together by an 8-meter-high elevated Exhibition Boulevard, so that people could easily traverse among the exhibition hall, the commercial plaza, the office buildings, the hotel and other functional areas.



交通体系 TRANSPORTATION SYSTEM

国家会展中心内部设计小车、客车停车位共计近5050个，可以满足举办各种大型展览及重大活动的需求，设计了先进的交通体系，人车分流、人货分流、各业态之间自成体系，确保展会布展、撤展以及日常交通安全、有序。

With a total of 5050 parking space for cars and buses, NECC can suit requirements of a variety of large-scale exhibitions and major events. The advanced transportation system will separate pedestrians from vehicles and freight carriers with no interference from one another to ensure the safe, orderly operations of exhibitions and the smooth flow of daily traffic.

货车从10号门进入北广场轮候，再通过首层和二层环绕展厅的专用车道，从各个方向直达任何展厅，确保满足高效率地完成同期撤展和布展的工作需求。

Freight trucks will enter the north exhibition space for waiting, and access any exhibition hall through the reserved lane on the first and second floor, so that the dismantling of one exhibition and the setup of another can take place simultaneously and be completed efficiently.



活动平台 ACTIVITY PLATFORMS

国家会展中心拥有10万平方米室外展场、1万平方米中央广场、1万平方米多功能展厅、8米标高会展大道等多处富于变化的空间和场地，适合举办各类世界级、国家级、区域级大型经贸、文化、娱乐等活动。

NECC has 100,000 square meters in outdoor exhibition space, a central square of 10,000 square meters, a multifunctional hall of over 10,000 square meters, and an elevated walkway 8 meters above the ground. The versatile space and venues are ideal for international, national and regional events that focus on trade, culture or entertainment.



02 会议
CONFERENCE

会议设施 CONFERENCE FACILITIES

国家会议中心(上海)是由中国国际进口博览会开幕式、虹桥国际经济论坛举办地为代表,包括78个大中小型会议室、共计5.6万平方米会议面积组成的国际化现代会议设施“群落”,是截至目前中国上海会场面积最大、数量最多的主场外交会议场地。

The National Convention Center (Shanghai) has hosted a range of major events including the opening ceremony of the first China International Import Expo (CIIE) and the Hongqiao International Economic Forum. As an international complex equipped with modern conference facilities, the Center features 78 conference rooms of various sizes and a total of 56,000 square meters of conference space. It serves as the main venue for diplomatic conferences in Shanghai, China with by far the largest floor area and the greatest number of conference rooms.



主会场会议室 THE CONFERENCE HALLS AT THE MAIN CONFERENCE VENUE

国家会议中心(上海)主会场,包括迎宾厅、共享厅、会议大厅、南北交流厅、贵宾室、23米层尊享会议区。

The main conference venue at the National Convention Center (Shanghai) consists of the Reception Hall, the Sharing Hall, the Conference Hall, the North-South Exchange Hall, the VIP Room and the 23-meter-high Exclusive Meeting Area.



会议室名称 Room Number	面积 Room Size	长宽高 Length, Width, Height	形式 Styles	标配人数 Seating Capacity
会议大厅 Conference Hall	3687m ²	62.4m x 59.1m x 11.7m	剧院式 Theater Style	2500
			课桌式 Classroom Style	960
共享厅 Sharing Hall	594m ²	11m x 54m x 6.3m	剧院式 Theater Style	250
			课桌式 Classroom Style	210
南北交流厅 South-North Exchange Hall	919.8m ²	30.43m x 25.2m x 4.9m	剧院式 Theater Style	360
			课桌式 Classroom Style	330
会议室名称 Room Number	面积 Room Size	长宽高 Length, Width, Height	形式 Styles	标配人数 Seating Capacity
南/北01 South/North 01	80m ²	12m x 6.6m x 2.6m	剧院式 Theater Style	40
			课桌式 Classroom Style	36
南/北02 South/North 02	80m ²	12m x 6.6m x 2.6m	剧院式 Theater Style	40
			课桌式 Classroom Style	36
南/北03 South/North 03	260.4m ²	23.5m x 12m x 2.6m	剧院式 Theater Style	180
			课桌式 Classroom Style	226
南/北04 South/North 04	88m ²	9.5m x 8.7m x 2.6m	剧院式 Theater Style	40
			课桌式 Classroom Style	36
南/北05 South/North 05	37m ²	6m x 6.16m x 2.6m	剧院式 Theater Style	40
			课桌式 Classroom Style	36
南/北06 South/North 06	55m ²	9.4m x 5.6m x 2.6m	剧院式 Theater Style	40
			课桌式 Classroom Style	36

4.2平行会场会议室 THE CONFERENCE HALLS AT THE PARALLEL CONFERENCE VENUE

平行会场是虹桥国际经济论坛举办地,由包括A、B、C、D(各1683平方米)4个会议厅及8个贵宾室、多功能厅(1860平方米)、丝路厅(1041平方米)和1.5万平方米的公共区域组成。

Exclusively for the Hongqiao International Economic Forum, the parallel conference venue consists of four conference halls (A, B, C and D each with 1,683 m²), eight VIP rooms, a multi-purpose hall (1,851 m²), the Silk Road Hall (1,041 m²) and a public area (15,000 m²).



会议室名称 Room Number	面积 Room Size	长宽高 Length, Width, Height	形式 Styles	标配人数 Seating Capacity
A厅 Hall A	1683m ²	49.5m x 34m x 10m	口型桌 Hollow Square Style	306
B厅 Hall B			课桌+剧院式 Classroom+Theater Style	792
C厅 Hall C			剧院式 Theater Style	1008
D厅 Hall D			课桌式 Classroom Style	576
A1/A2厅 Hall A1/A2 B1/B2厅 Hall B1/B2 C1/C2厅 Hall C1/C2 D1/D2厅 Hall D1/D2	842m ²	24.8m x 17m x 10m	口型桌 Hollow Square Style	108
			课桌+剧院式 Classroom+Theater Style	288
			剧院式 Theater Style	504
			课桌式 Classroom Style	216
E厅 Hall E	1860m ²	62m x 30m x 10m	口型桌 Hollow Square Style	306
			课桌+剧院式 Classroom+Theater Style	792
			剧院式 Theater Style	1008
			课桌式 Classroom Style	576
丝路厅 Silk Road Hall	1041m ²	半径17.5m x 10m	口型桌 Hollow Square Style	126
			课桌+剧院式 Classroom+Theater Style	130
			剧院式 Theater Style	150
			课桌式 Classroom Style	120
			圆形桌 Circle Style	107



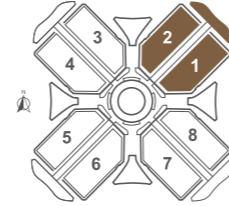
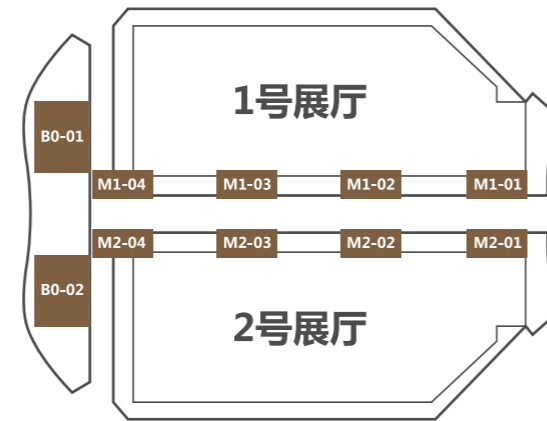
会议设施 ACTIVITY PLATFORMS

场馆内会议室：
Conference Room in the Venue:

会议室编号 Room Number	面积 Room Size	长宽 Length, Width	形式 Styles	标配人数 Seating Capacity
M1-01	107m ²	9m x 11m	接待室 Reception Room	22
M1-02	231m ²	21m x 11m	剧院式 Theater Style	112
M1-03	231m ²	21m x 11m	剧院式 Theater Style	112
M1-04	170m ²	20m x 8m	剧院式 Theater Style	112
M2-01	107m ²	9m x 11m	董事会式 Boardroom Style	48
M2-02	231m ²	21m x 11m	剧院式 Theater Style	112
M2-03	231m ²	21m x 11m	课桌式 Classroom Style	100
M2-04	170m ²	20m x 8m	剧院式 Theater Style	112
B0-01	468m ²	26m x 18m	剧院式 Theater Style	272
B0-02	468m ²	26m x 18m	课桌式 Classroom Style	208

1号、2号展厅8米步道及
办公楼B座3楼会议室布局

Conference rooms on the 8-meter-high elevated Exhibition Boulevard between 1H and 2H, and conference rooms on the third floor in the Office Building B

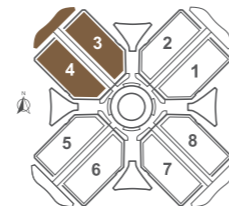
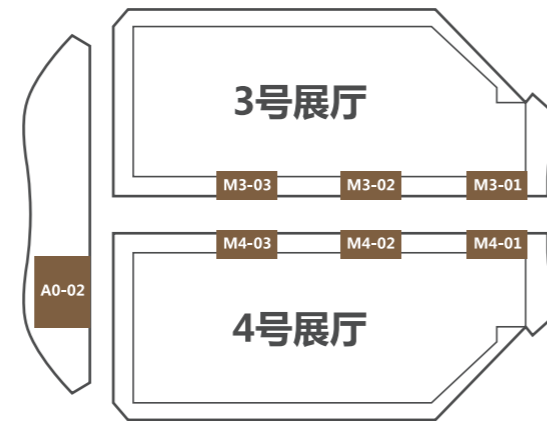


场馆内会议室：
Conference Room in the Venue:

会议室编号 Room Number	面积 Room Size	长宽 Length, Width	形式 Styles	标配人数 Seating Capacity
M3-01	165m ²	15m x 11m	接待室 Reception Room	22
M3-02	184m ²	16.7m x 11m	剧院式 Theater Style	112
M3-03	176m ²	16m x 11m	剧院式 Theater Style	112
M4-01	172m ²	15.6m x 11m	董事会式 Boardroom Style	48
M4-02	176m ²	16m x 11m	剧院式 Theater Style	112
M4-03	176m ²	16m x 11m	课桌式 Classroom Style	100
A0-02	468m ²	26m x 18m	课桌式 Classroom Style	208

3号、4号展厅8米步道及
办公楼A座3楼会议室布局

Conference rooms on the 8-meter-high elevated Exhibition Boulevard between 3H and 4H, and conference rooms on the third floor in the Office Building A

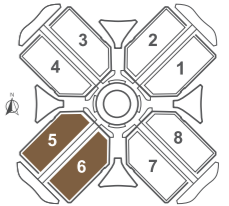
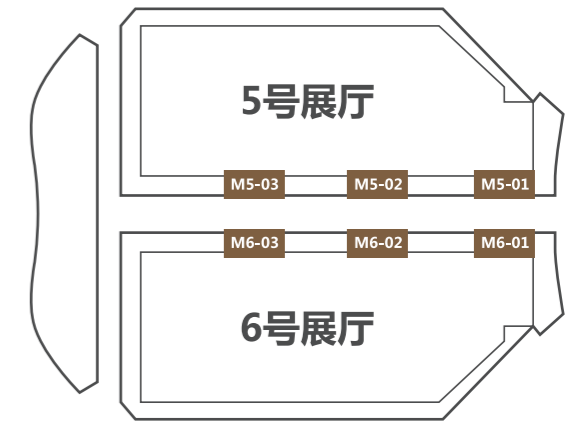


场馆内会议室：
Conference Room in the Venue:

会议室编号 Room Number	面积 Room Size	长宽 Length, Width	形式 Styles	标配人数 Seating Capacity
M5-01	171m ²	15m x 11.4m	董事会式 Boardroom Style	48
M5-02	176m ²	16m x 11m	剧院式 Theater Style	112
M5-03	176m ²	16m x 11m	剧院式 Theater Style	112
M6-01	165m ²	15m x 11m	接待室 Reception Room	22
M6-02	176m ²	16m x 11m	剧院式 Theater Style	112
M6-03	176m ²	16m x 11m	课桌式 Classroom Style	100

5号、6号展厅8米步道
会议室布局

Conference rooms on the 8-meter-high elevated Exhibition Boulevard between 5H and 6H

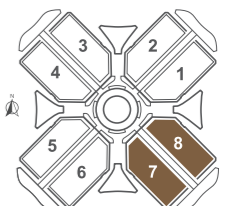
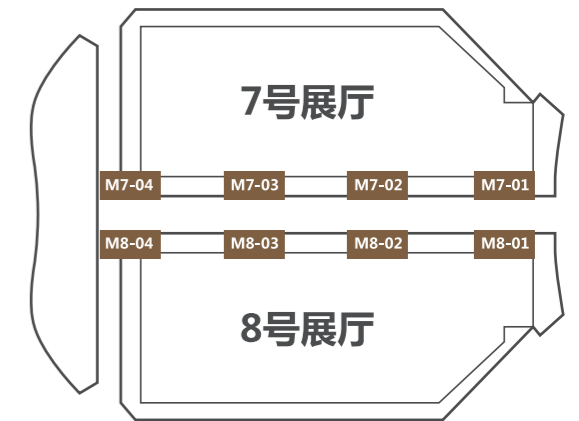


场馆内会议室：
Conference Room in the Venue:

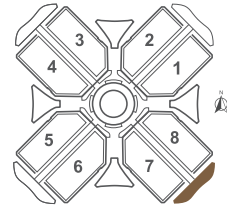
会议室编号 Room Number	面积 Room Size	长宽 Length, Width	形式 Styles	标配人数 Seating Capacity
M7-01	176m ²	16m x 11m	董事会式 Boardroom Style	48
M7-02	176m ²	16m x 11m	剧院式 Theater Style	112
M7-03	176m ²	16m x 11m	剧院式 Theater Style	112
M7-04	165m ²	15m x 11m	剧院式 Theater Style	112
M8-01	176m ²	16m x 11m	接待室 Reception Room	22
M8-02	176m ²	16m x 11m	剧院式 Theater Style	112
M8-03	176m ²	16m x 11m	课桌型 Classroom Style	100
M8-04	165m ²	15m x 11m	剧院式 Theater Style	112

7号、8号展厅8米步道
会议室布局

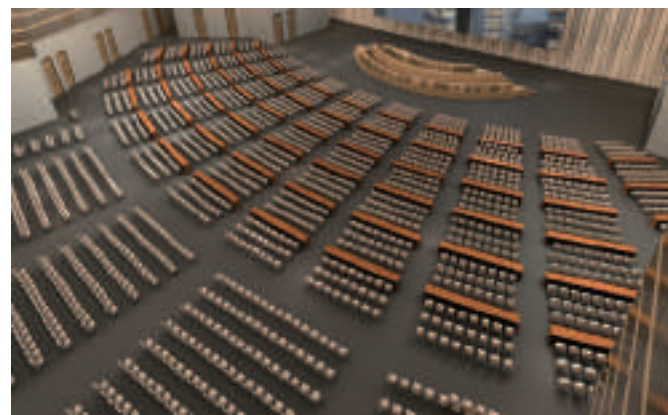
Conference rooms on the 8-meter-high elevated Exhibition Boulevard between 7H and 8H



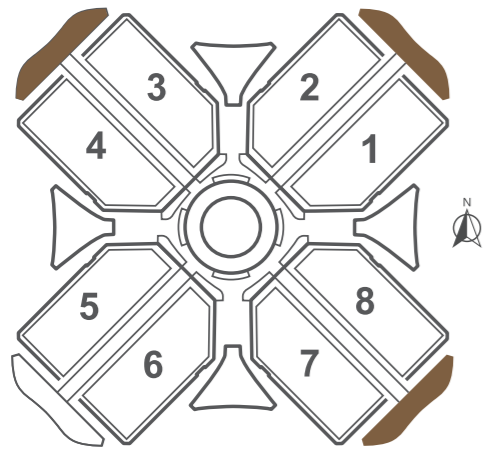
办公楼C座内会议室：
Conference room in the
Office Building C



会议室编号 Room Number	面积 Room Size
C0-01	546m ²
C0-02	442m ²
C0-03	442m ²
C0-04	416m ²
C0-05	390m ²
C0-06	364m ²
C0-07	221m ²
C0-08	221m ²
C0-09	126m ²
C0-10	126m ²
C0-11	108m ²
C0-12	108m ²
C0-13	99m ²
C0-14	99m ²
C0-15	90m ²
C0-16	90m ²



03 办公 OFFICE



国家会展中心办公楼
NECC OFFICE BUILDING

国家平台之上，5A甲级办公楼
GRADE A OFFICE
BUILDING IN A STATE-
LEVEL EXHIBITION CENTER

展览配套·办公 OFFICE BUILDING

国家会展中心办公楼，直面全年数十场行业大展，是世界进入中国的第一站，也是中国面向世界的新起点。

National Exhibition and Convention Center (Shanghai) hosts dozens of industry exhibitions all year round. NECC office building will serve as the first stop for the international enterprises to establish their presence in China and the new starting point for the Chinese enterprises to march forward to the world.



会展驱动力
带来无限商机

国家会展中心办公楼依托国家平台的展会效应，坐享大型展会人流、物流、资金流和信息流带来的无限商机。国家平台之上的办公，不仅是提高企业形象和品牌推广的绝佳舞台，更为行业内企业提供了充沛资源。

GLOBAL EXHIBITION VENUE
SPAWNS TREMENDOUS BUSINESS
OPPORTUNITIES

Making full use of the tremendous influence brought by this state-level exposing platform, the NECC (SH) gathers "people, commodities, capital and information together" to create infinite business opportunities. It is an ideal office space to bestow you with abundant resources for improving corporate image and branding.

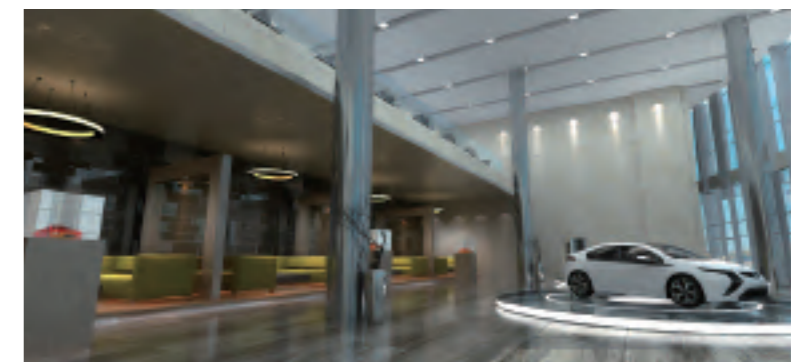


展办结合
更好的品牌秀场

甲级办公与高端展示交相辉映，形成展示、办公、贸易相结合的特色商务平台；展厅与办公楼无缝对接，成就企业品牌全球化推广的至佳展示T台。额外的预展与延展，为企业产品推广，夯实品牌，提升知名度，接触行业前沿资讯、技术与服务提供了更广阔平台。

BEST COMMERCIAL PLATFORM FOR
EXHIBITION AND BUSINESS
A SHOWROOM FOR CHINESE AND
INTERNATIONAL BRANDS

The National Exhibition and Convention Center (Shanghai) integrates Grade A office building and high-end exhibition facilities to create a unique commercial platform that combines exhibition, business and trade functions. The seamless connection of the exhibition hall and office building brings you and your brand to the world stage.



绿色商务空间 改写传统办公感受

GREEN BUSINESS SPACE PROVIDES YOU WITH A PLEASURE INCOMPARABLE FROM THE CONVENTIONAL OFFICE MODE

国家绿色三星建筑认证	Green Building label (3 star)
2,000平方米气派大堂, 16米挑高	2,000m ² of imposing 16-meter-high lobby
8,000平方米超阔标准层, 自由灵活分割	A massive space of 8,000m ² that can be easily configured and used for either offices or showrooms
1-2层设有单层展厅及双层展厅, 办公与展示互动交融	Mono-layer exhibition halls of 8-meter height and double-deck exhibition halls of 16-meter height are offered at the first and the second floor, interacting office with exhibition.
会展大道, 联通各大展厅和商业广场	Linked with all the showrooms and the NECC plaza by exhibition avenue.
每座办公楼配备两间500平方米多功能会议室	Each office building has two 500m ² multipurpose meeting rooms
每座办公楼配备两座500平方米空中花园	Two gardens of 500m ² for each office tower
稳定的三联供绿色能源系统	Stable triple green energy supply system
办公楼配套停车位各 230 个	Each office building has 230 parking spaces



会务
CONFERENCE



茶歇
COFFEE BREAK



仓储服务
WAREHOUSING SERVICES



员工食堂
STAFF CANTEEN



咖啡厅、便利店
CAFE AND
CONVENIENCE STORES



24小时银行
24/7 BANKINGSIVE

高端商务配置, 优质增值服务 PREMIUM VALUE-ADDED SERVICES WITH HIGH-END BUSINESS CONFIGURATION

- 展厅周边及辅楼, 共配置500余间办公室与储藏室功能用房, 满足展会主办方及商户商务洽谈、长期或短期租赁需求。
- 办公楼B座2层一站式行政服务窗口正式启用, 集合工商、税务、旅游等服务, 极大地便利了企业行政报审。
- We offer a total of over 500 offices, storerooms and other function rooms around the Exhibition Hall dedicated to meet the needs of organizers and tenants for business meeting and long- or short-term rental.
- The one-stop service center for government affairs at L2 Building B was formally opened. Government agencies including business administration, tax administration, customs, tourist administration and the intellectual property bureau are stationed in the office complex to examine and approve business projects of tenants, which can boost their work efficiency significantly.



入驻企业 ENTERPRISES LIST

办公楼	室号	公司名称
A	A102	诚赛(上海)投资管理有限公司
	A104	上海企德货展设备有限公司
	A301	上海肯希企业管理咨询有限公司
	A304	上海连净商贸有限公司
	A305	集创(上海)电子科技有限公司
	A306	恒勃控股股份有限公司
	A308	上海万享冷却设备有限公司
	A309	上海霍克连展览服务有限公司
	A310、311	上海核建科创园发展有限公司
	A312	新疆亚欧国际物资交易中心有限公司
	A313	上海兴万置业有限公司
	A401	上海云木科技有限公司
	A406	北京逸格天骄国际展览有限公司
	A409	上海昊赫信息技术有限公司
	A410、411	上海芭雅医疗科技股份有限公司
	A501-508/525-530	那智不二越(上海)贸易有限公司
	A510	上海灵硕会展服务有限公司
	A511	集东贸易(上海)有限公司
	A522、523	微格(上海)商务信息咨询有限公司
	A515	上海鸿达展览服务有限公司
	A516	北京钓鱼台会展有限公司
	A518	广州音诺展览服务有限公司
	A520	上海立时通展览服务有限公司
	A521	宏图展览展示(上海)有限公司
	A524	那智不二越(上海)贸易有限公司
	A601	上海清和商贸有限公司
	A604	武汉瑞美展览股份有限公司
	A605	上海司马展览建设有限公司
	A606	通用国际广告展览有限公司
	A607、608	上海沃森环保股份有限公司
A609、624	博能直融(上海)数据科技有限公司	
A626	深圳市卡通通展览股份有限公司	
A627	上海从量文化发展有限公司	
A628	如意屋家居有限公司	
A629	上海元产会展有限公司	
A630	上海信睿信息技术有限公司	
B	B104	江苏文广五十弦文化传播股份有限公司
	B202、203、204	上海市青浦区人民法院
	B301	枝星储运(上海)有限公司
	B304	上海中贸美凯龙经贸发展有限公司
	B305	宏图展览展示(上海)有限公司

入驻企业
ENTERPRISES LIST

办公楼	室号	公司名称
B	B306	上海鑫盾商务咨询有限公司
	B307	深圳市赛瑞产业研究有限公司
	B308	上海翱利贸易有限公司
	B309	衢州港诚机电产品制造有限公司
	B311	上海星企汇智能科技有限公司
	B312	上海佰誉环境技术工程有限公司
	B313	深圳市德保膳食管理有限公司
	B401	上海丰沃国际物流有限公司
	B402	上海鸿翼会展服务有限公司
	B403	上海天鸽会务服务有限公司
	B404	浦项建设(中国)有限公司上海分公司
	B406	潜星进出口(上海)有限公司
	B408	景德镇市淑媛食品有限公司
	B409	上海广告有限公司
	B413	昊佰电子科技(上海)有限公司
	B417	浦项建设(中国)有限公司上海分公司
	B501	深圳市格美珠宝首饰有限公司
	B505	上海途腾展览服务有限公司
	B506、507	上海奥维舞台设备有限公司
	B508	广州广交会展览工程有限公司上海分公司
	B510-523/710-723	上海安吉汽车物流股份有限公司
	B524	上海乾准仪器仪表有限公司
	B525	上海国桐会展服务事务所
	B526、527	上海虹馆文化发展有限公司
	B528	中国移动通信集团上海有限公司
	B529	国榆(上海)展览服务有限公司
	B530	上海依佩克国际运输有限公司
	B604	上海贸促展览展示有限公司
	B605	浙江铭振电子股份有限公司
	B606、607	运展环球物流(北京)有限公司上海分公司
	B608	华创天元实业发展有限责任公司
	B609	寰洲商务管理(上海)有限公司
	B610、611、612、617、623、624	上海安航实业有限公司
	B613	上海谷龙广告有限公司
	B614	豪士科安全装备(苏州)有限公司
	B615	中商亚欧祥瑞跨境电商电子商务(上海)有限公司
	B619	辽宁弘历燃化有限公司
	B620	上海宾其自动化设备有限公司
	B622	羊汇展示服务(上海)有限公司
	B626、627	上海东浩兰生国展置业有限公司
	B629	上海世庭投资管理有限公司
	B630	上海安得是会展服务有限公司
	B701	小葛葛(上海)饮料有限公司
	B704	上海宾其自动化设备有限公司
	B705	弥泰进出口(上海)有限公司
	B706	深巨管道系统(上海)有限公司
	B708	上海后浪展览服务有限公司
	B724	上海宾其自动化设备有限公司
	B726	上海汉海展览咨询有限公司
	B727	华靓实业发展(上海)有限公司
B725、728	辽宁奥克化学股份有限公司	
B729	上海纵舟实业有限公司	
C	C101、102	中国银行股份有限公司上海市分行
	C103	威马汽车科技集团有限公司
	C601-630	上海世科嘉车辆技术研发有限公司

04 商业
NECC PLAZA

展览配套·商业 NECC PLAZA

国家会展中心(上海)商业广场, 15万平方米新型商业平台, 由围绕中心广场的中央圆楼, 与环抱圆楼的八座钻石楼组成, 中央圆楼与钻石楼在1-3层相互联通。

商业广场集品牌创新、时尚精品、科技体验、艺术人文于一体, 是国内外品牌的世界秀场, 更是消费者的乐园。

NECC Plaza is an unprecedented commercial platform with a floor space of 150,000 square meters. It comprises a circular building embracing the central square and eight diamond-shaped buildings surrounding, which are interconnected on the first three floors. It combines brand innovation, fashion boutique, high-tech experience and arts into one place to serve as a showroom for Chinese and international brands.



展厅与商业广场 无缝连接

商业广场1-3层与各大展厅无缝连接, 形成0米、8米、16米三个交汇层, 便于客户在各大展厅与商业广场之间自由穿梭往来。

半开放空间 感受时尚魅力

3层的半室外建筑空间, 16米标高露台平台, 形成了独具特色、活力无限的时尚休闲空间, 于此感受商业广场的独特魅力。



创新六大业态 创见精彩世界

商业广场融合了餐饮美食、创新体验、时尚精品、城市主题、创意文化与娱乐休闲六大业态, 为展览之余提供完美的购物、休闲、人文体验。



SEAMLESS CONNECTION BETWEEN EXHIBITION HALLS AND NECC PLAZA

The first three floors of NECC Plaza are seamlessly connected with the exhibition halls, and customers can enter their destinations via different floors.

SEMI-OPEN SPACE ADDS FASHIONED CHARM

The semi-open space on the third floor and the 16-meter-high outdoor balcony add unique charm to the NECC Plaza create a distinct dynamic space for fashion and recreation.

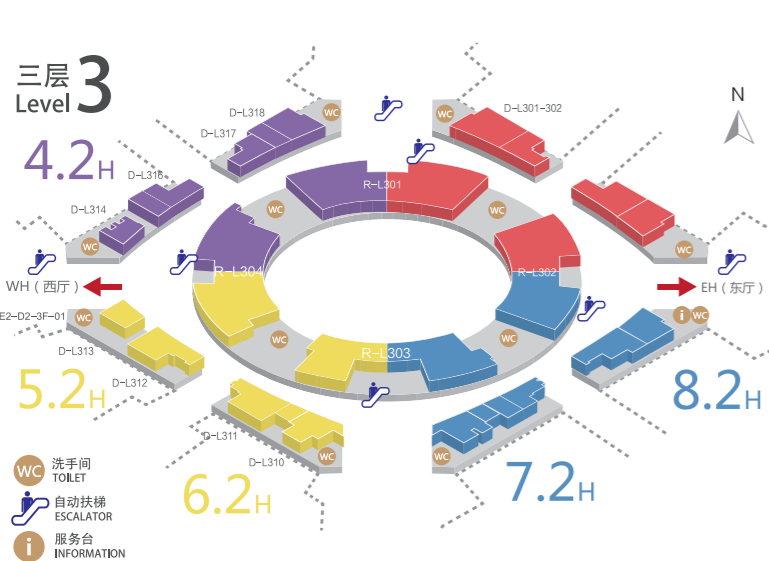
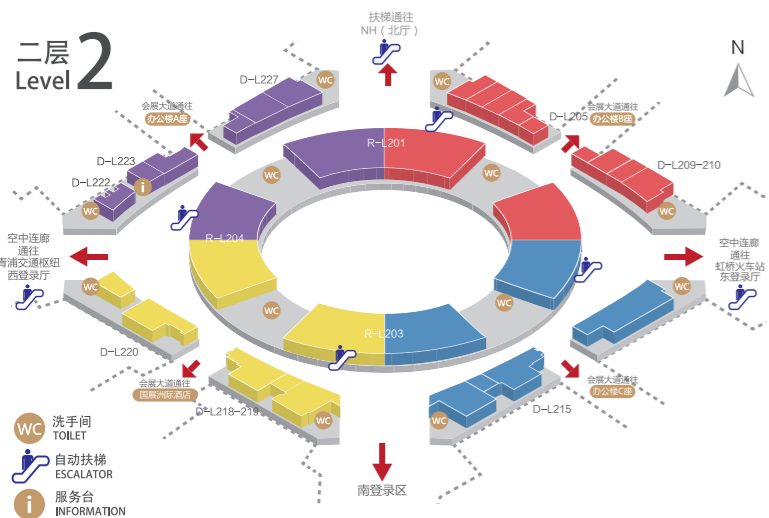
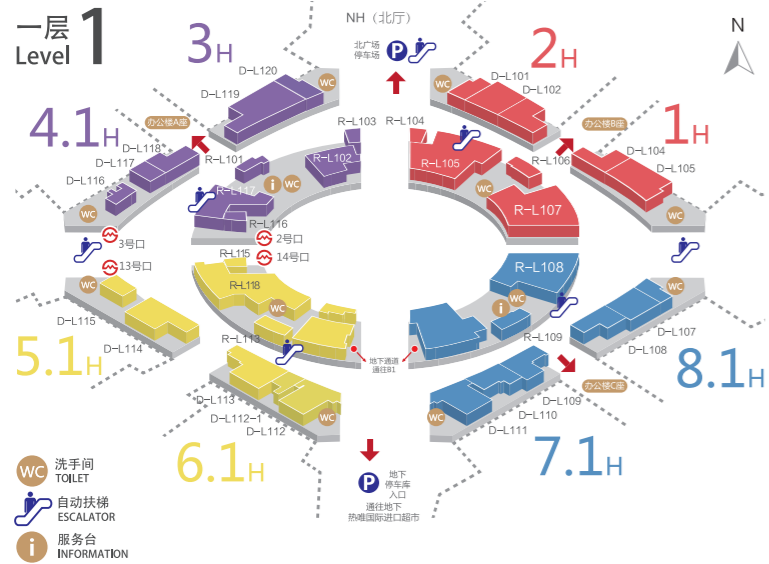


AN UNMATCHED WONDERFUL WORLD THAT OFFERS A FULL SPECTRUM OF SERVICES

Your one-stop center for all your business needs, offering a range of services including catering, innovative experiences, fashion boutiques, urban themes, creative culture and entertainment to deliver the ultimate shopping, recreational and cultural experience.



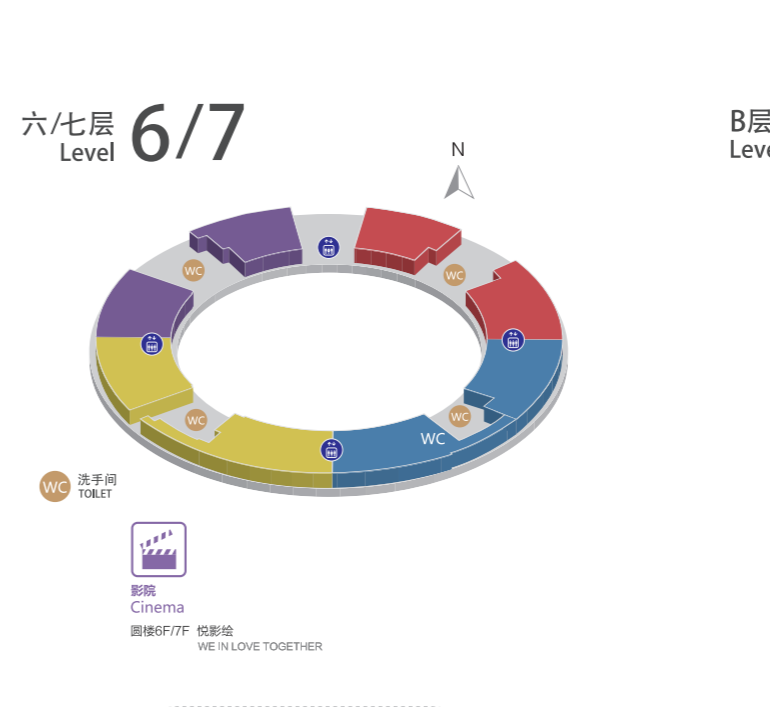
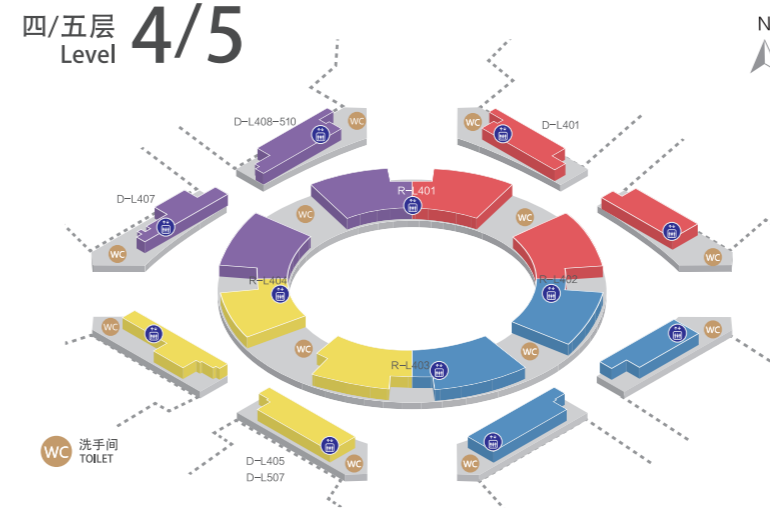
商户位置导览图 BUSINESS LOCATION MAP



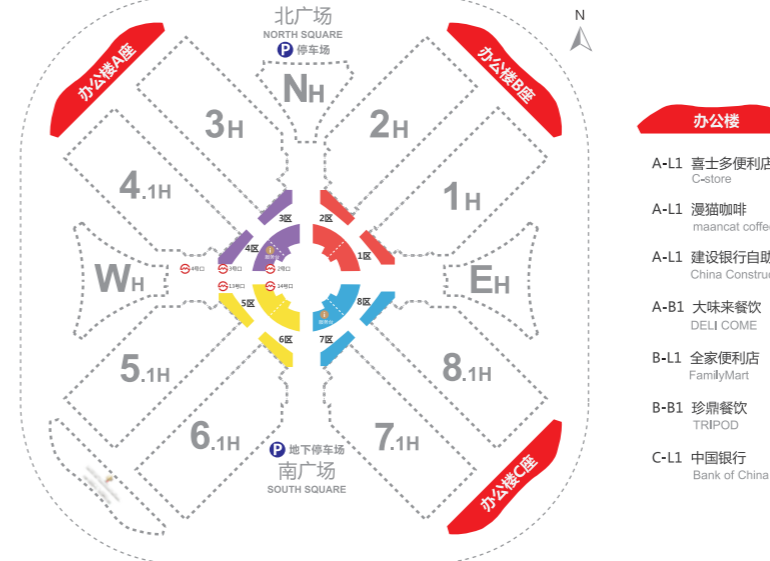
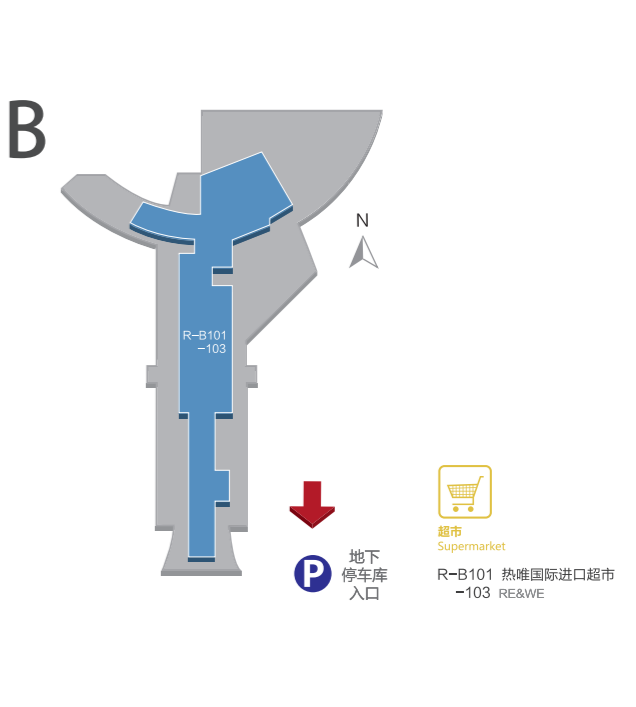
- 餐饮 Restaurant**
- D-L101 陈兴记生煎 bun fever
- D-L102 丽华快餐 Lihua Fast Food
- D-L104 星巴克 STARBUCKS
- D-L105 德克士 dicos
- D-L107 玩趣美味 FOOD HARBOUR
- D-L108 布谷布谷中式香米饭 BuguGugu Chinese Fragrant Rice
- D-L109 真功夫 zkungfu
- D-L110 韩锅 KOREAN TRADITIONAL CUISINE
- D-L111 老娘舅 laoniangju
- D-L112 太平洋咖啡 PACIFIC COFFEE
- D-L112-1 麦当劳 McDonald's
- D-L104 R-L104 康师傅私房牛肉面 Master Kong Chef's Table
- D-L114 肯德基 KFC
- D-L115 麝香猫咖啡 MUSKCAT COFFEE
- D-L116 香榭巴黎 CHAMPS ELYSEES PARIS
- D-L117 鲁肉范 Master Fan
- D-L118 得意大厨 Deyi Kitchener
- D-L119 必胜客 Pizza Hut
- D-L120 家有好面 Gourmet Noodle House
- R-L116 五芳斋 Wu Fang Zhai
- R-L107 上海特色小吃馆 -108 Shanghai Special Snacks Restaurant
- R-L113 新橙派
- R-L117 Tim Hortons **Opening soon**

- 体验 Experience**
- R-L109 顺丰体验店 SF EXPRESS
- R-L102 国展文创馆 NECC STORE
- R-L105 安吉物流 SAIC Anji Logistics
- R-L118 建设银行 China Construction Bank
- R-L115 7-11便利店 7-Eleven
- 商业 Supporting**
- R-L101 喜士多 C-STORE
- R-L103 万根缘 Wan Gan Yuan
- R-L106 7-11便利店 7-Eleven
- 餐饮 Restaurant**
- D-L209 康师傅大牌饭 -210 Master Rice by Master Kong
- D-L215 乐铺 Galop Restaurant
- D-L218 谷田稻香 -L219 The Frog Prince
- D-L220 肯德基 KFC
- D-L227 麦当劳 McDonald's
- R-L203 盒马鲜生 Freshippo
- D-L222 东方既白 East Dawning

- 商业 Supporting**
- R-L301 进口商品展销中心 -304
- E2-D2-3F-01 中国银行 Bank of China
- 餐饮 Restaurant**
- D-L301 宝莱纳 -302 PAULANER MUNCHEN
- D-L310 星巴克 STARBUCKS
- D-L312 水晶珊瑚主题餐厅 Crystal&Coral Restaurant
- D-L313 意味餐厅 Gusto Homemade
- D-L314 麝香猫咖啡 MUSKCAT COFFEE
- D-L316 大帽山港式餐厅 Taimoshan Hong Kong Style Restaurant
- D-L317 欧乐坊 Hola House
- D-L318 美罗思披萨 Melrose Pizza
- D-L311 耶里夏丽 Yesrshari



- 餐饮 Restaurant**
- D-L401 蓝森 **Opening soon** Linesun
- D-L405 丰收日 Harvest Festival
- D-L507 大帽山港式餐厅 Taimoshan Hong Kong Style Restaurant
- D-L408 欧乐坊 -510 Hola House
- 体验 Experience**
- R-L401 台湾道 -404 Tai Wan Way **内设餐饮**



- 办公楼**
- A-L1 喜士多便利店 C-store
- A-L1 漫猫咖啡 maancat coffee
- A-L1 建设银行自助银行 China Construction Bank(ATM)
- A-B1 大味来餐饮 DELI COME
- B-L1 全家便利店 FamilyMart
- B-B1 珍鼎餐饮 TRIPOD
- C-L1 中国银行 Bank of China

05 酒店
HOTEL

国家会展中心 上海洲际酒店

国家会展中心上海洲际酒店是国家会展中心内唯一一家奢华品牌酒店，与展厅通过8米标高步行通道相连。酒店距离虹桥国际机场和虹桥火车站仅5公里，从酒店步行3分钟即达轨道交通二号线，便捷连通上海各大核心商圈。

以可持续性发展作为设计理念，酒店共拥有536间时尚雅致的客房与套房，四间独具特色的餐厅和酒廊，以及逾2,200平方米宽敞灵活的宴会场地，是筹办高端会议、大型宴会和梦幻婚典的理想之所。

INTERCONTINENTAL SHANGHAI HONGQIAO NECC

InterContinental Shanghai Hongqiao NECC is the only luxury hotel within National Exhibition and Convention Center (Shanghai) and is connected with the exhibition area through the 8-meter elevated Expo Boulevard. The hotel is just five kilometers from Hongqiao International Airport and Hongqiao Railway Station. It is only a three-minute walk to Metro Line 2 on the Shanghai subway network.

Designed according to stringent sustainable principles, InterContinental Shanghai Hongqiao NECC offers 536 elegantly designed rooms and suites featuring the finest modern comforts for discerning guests.

The hotel also features four showpiece restaurants and lounges, plus more than 2,200 sqm of stylish event space perfect for hosting high-level meetings, banquets, business galas and magical weddings.

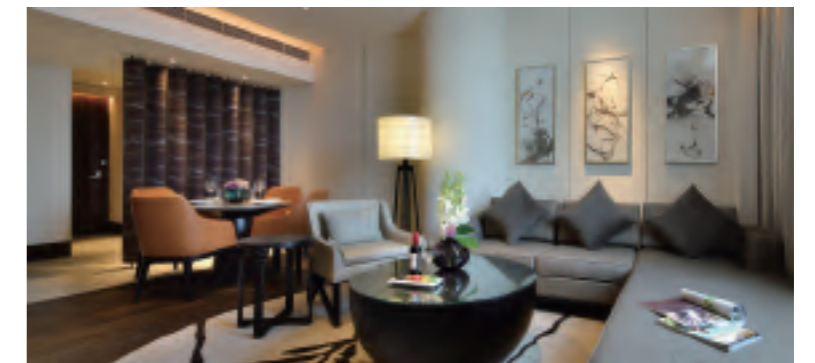
餐饮及娱乐 DINING & ENTERTAINMENT

伍臻全日餐厅
彩丰楼中餐厅
展吧
大堂酒廊
洲际行政俱乐部
颐尊水疗及健身中心

Five Live All Day Dining Restaurant
CAI FENG LOU Chinese Restaurant
BRU Bar
Lobby Lounge
Club InterContinental
Touch Spa & Fitness Center

最佳商旅之选 BEST CHOICE FOR BUSINESS

- ◎ 精致舒适的客房及免费的高速网络
- ◎ 不同风格的优雅餐厅及放松身心的水疗馆与健身中心
- ◎ 定制的班车线路到达最理想的出行目的地
- ◎ 便捷的预定渠道及激动人心的IHG优悦会忠诚度计划
- ◎ Elegantly furnished guest rooms and complementary high-speed Internet
- ◎ Selection of fine restaurants and outlets as well as Spa and Fitness Center
- ◎ Tailored shuttle bus schedule to desired destinations
- ◎ Convenient booking channel and exciting IHG Rewards Program



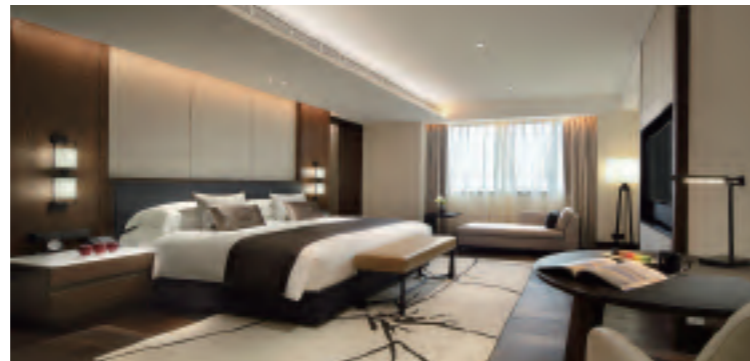
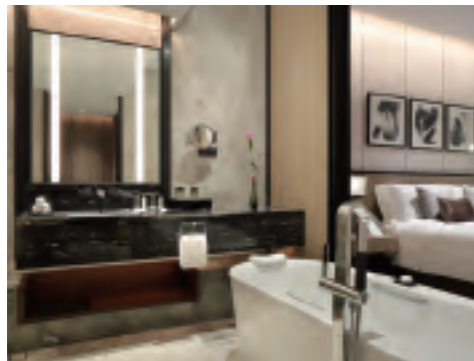
最佳会务之选 BEST CHOICE FOR MICE

- ◎ 数量充足的双床客房
- ◎ 至多 2,200 平米灵活组合的酒店内会场；无缝衔接国家会展中心内 400,000 平米室内展馆，100,000 平米室外展区及 50 间会议室，共计 24,000 平米
- ◎ IHG 商悦会计划为活动举办增添价值
- ◎ Sufficient number of twin bed guest rooms
- ◎ Flexible Mixture of on-site meeting venues up to 2,200 sqm; Direct access to 400,000 sqm indoor exhibition area, 100,000 sqm outdoor exhibition area and 50 meeting rooms with total 24,000 sqm in NECC
- ◎ Value-added IHG Business Rewards program



客房 GUEST ROOMS

客房面积40平米	房型 Room Type	面积 (平方米) Size (sqm)	数量 Quantity
48英寸LCD电视	洲际高级房 InterContinental Superior Room	40	205
高速宽带及无线网络连接	洲际豪华房 InterContinental Deluxe Room	45	172
BOSE及PHILIPS音响设备	洲际行政房 Club InterContinental Room	40	70
雀巢胶囊咖啡机	洲际行政豪华房 Club InterContinental Premier Room	45	45
Room size 40 sqm	洲际高级套房 InterContinental Superior Suite	58	20
48 inch LCD TV	洲际豪华套房 InterContinental Deluxe Suite	98	22
High-speed internet access & Wi-Fi connection	大使套房 Ambassador Suite	140	1
BOSE and PHILIPS sound system	总统套房 Presidential Suite	250	1
Nespresso coffee machine	共计 Total		536



会议及活动 MEETING & EVENT

- 900平米的无柱大宴会厅适宜举办大型活动
- 10个灵活的多功能厅满足不同规模的活动需求
- 宽敞的宴会前厅适宜安排各类会议茶歇及鸡尾酒会

- Grand Ballroom with 900 sqm to cater large size events
- 10 flexible functional rooms with different sizes tailored to each occasion
- Spacious pre-function area is ideal for coffee breaks or cocktail receptions



Function Rooms Capacity Chart 会议室容量表									
Function Room 会议室	Dimension 面积			Room Capacities 会议室容量					
	Sq M 平方(米)	L x W x H / M 长x宽x高(米)	Floor 楼层	Banquet 宴会式	Classroom 课桌式	Theatre 剧院式	U-Shape U字型	Hollow Square 回型	Boardroom 董事会
Grand Ballroom1+2+3 大宴会厅1+2+3	894	43.8 x 20.4 x 9	2	660	560	900	160	162	68
Grand Ballroom Foyer 大宴会厅休前厅	460	-	2	-	-	-	-	-	-
Ballroom 1 宴会厅1	298	14.6 x 20.4 x 9	2	220	160	240	45	60	24
Ballroom 2 宴会厅2	306	15 x 20.4 x 9	2	220	160	240	45	60	24
Ballroom 3 宴会厅3	295	14.4 x 20.4 x 9	2	220	160	240	45	60	24
Ballroom1+2 宴会厅1+2	605	29.6 x 20.4 x 9	2	440	360	408	85	102	52
Ballroom2+3 宴会厅2+3	600	29.4 x 20.4 x 9	2	440	360	408	85	102	52
Function Room 1 多功能厅1	32	6 x 5.2 x 3.7	2	20	12	24	12	18	12
Function Room 2 多功能厅2	32	6 x 5.2 x 3.7	2	20	12	24	12	18	12
Function Room 1+2 多功能厅1+2	64	12 x 5.2 x 3.7	2	40	24	48	24	30	20
Function Room 3 多功能厅3	50	9.5 x 5.2 x 3.7	2	30	24	48	21	24	22
Function Room 4 多功能厅4	80	8.6 x 9.2 x 3.7	2	50	36	48	24	30	18
Function Room 5 多功能厅5	80	8.7 x 9.2 x 3.7	2	50	36	60	27	36	20
Function Room 6 多功能厅6	80	8.7 x 9.2 x 3.7	2	50	36	60	27	36	20
Function Room 5+6 多功能厅5+6	160	17.4 x 9.2 x 3.7	2	110	72	110	45	54	34
Function Room 7 多功能厅7	44	9.1 x 4.8 x 3.7	2	VIP Lounge with 10 sofa seats 贵宾休息室, 含10人席位沙发椅					
Function Room 8 多功能厅8	30	6.1 x 4.8 x 3.7	2	VIP Lounge with 10 sofa seats with buildin washroom 贵宾休息室, 含10人席位沙发椅及盥洗室					
Function Room 9 多功能厅9	150	13.8 x 10.8 x 3.7	2	80	72	72	42	54	32
Function Room 10 多功能厅10	127	12.8 x 9.9 x 3.7	2	60	60	60	36	48	26
Function Room 9+10 Foyer 多功能厅9+10前厅	330	22.4 x 14.7 x 3.7	2	240	180	180	78	96	62
VIP Room 贵宾厅	54	-	2	-	-	-	-	-	-

06 交通
TRANSPORTATION

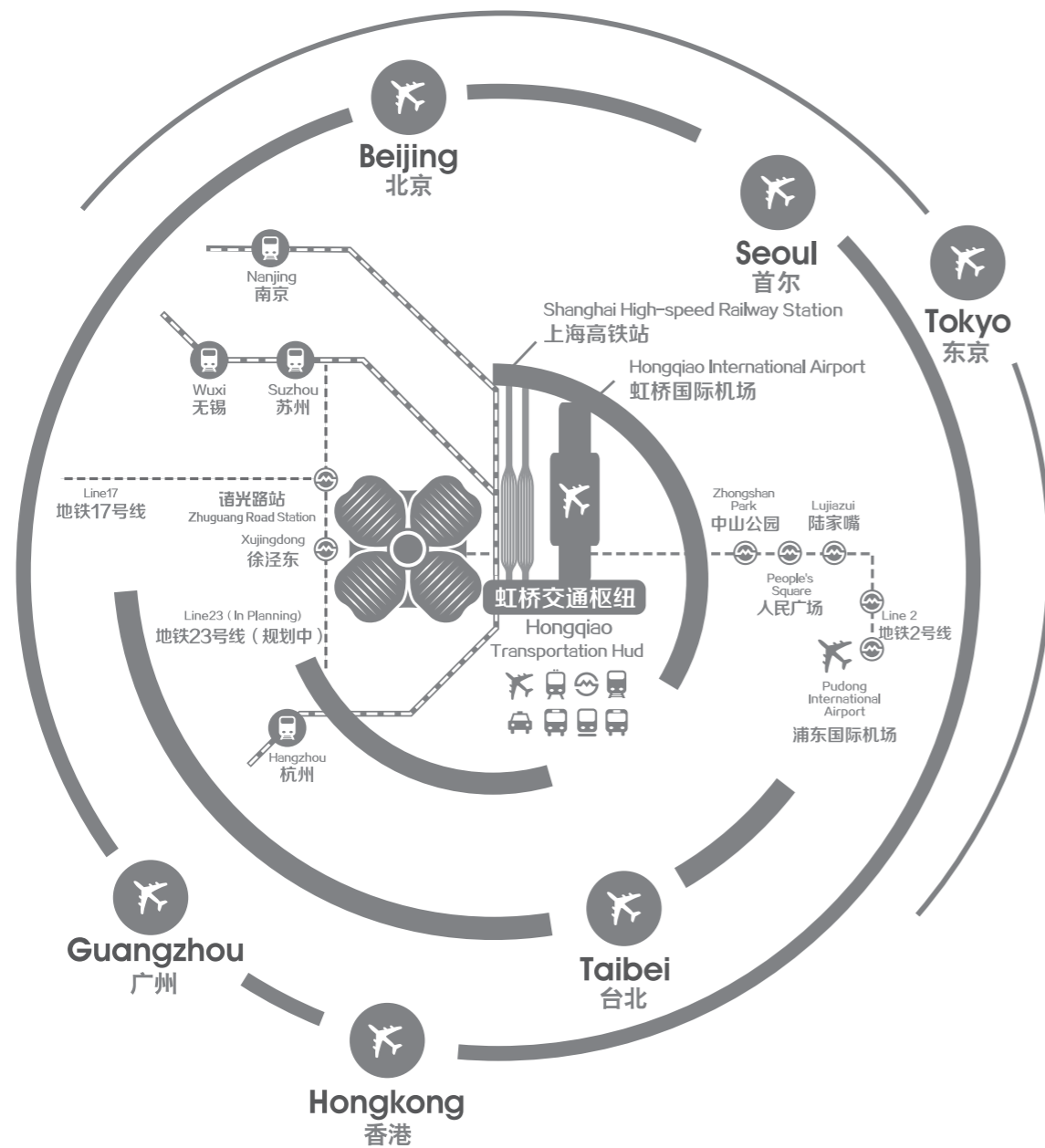
交通网络发达

国家会展中心位于上海虹桥商务区核心区域西部，与虹桥交通枢纽直线距离仅1.5公里，通过地铁2号线与虹桥火车站、虹桥机场紧密相连。高铁1至2小时可到达长三角各重要城市，航空2至3小时可到达亚太主要经济城市。地铁2号线西起点徐泾东站和17号线诸光路站位于项目内。

未来，23号线（规划中）也为国家会展中心设有专车。

HIGHLY DEVELOPED TRANSPORTATION NETWORK

Just 1.5km away from Hongqiao Transportation Hub, NECC is linked to Hongqiao Airport and Hongqiao Railway Station via the city's Metro Line 2. It takes only one or two hours via high-speed rail to reach the major cities in Yangtze River Delta, and two or three hours via plane to every major city with a sizable economy in the Asia-Pacific region. Served as the starting point of the Metro Line 2 and Zhuguang Road Station on the Metro Line 17, NECC will have direct underground stations for Metro Line 23(planned) in the near future.



如何抵达 HOW TO ARRIVE

飞机 Airline

国家会展中心距离虹桥机场航站楼仅1.5公里，距浦东机场约60公里。均可由地铁2号线和17号线直达国家会展中心。

NECC is only 1.5 km away from the Hongqiao airport and 60 km away from the Pudong. And it can be reached by the Metro Line 2 and Line 17.

火车 Train

国家会展中心距离上海虹桥火车站仅1.5公里，可由地铁2号线和17号线直达国家会展中心；距上海火车站25公里，距上海南站23公里，均可乘1号线到人民广场站，换乘地铁2号线直达会展中心。

NECC is only 1.5 km away from the Hongqiao Hongqiao Railway Station and it can be reached by the Metro Line 2 and Line 17.

NECC is 25km away from Shanghai Railway Station and 23km away from Shanghai South Railway Station. People can take Line 1 to the People's Square Metro Station and then transfer to Line 2 to get to NECC.

地铁 Metro

周边拥有三条轨道线路：2号线、17号线和23号线（规划中），其中2号线直达展馆内部，贯穿了整个上海，由东到西连接两个机场和一个火车站。

NECC (Shanghai) is accessible by three Metro lines: Line 2, Line 17 and Line 23(planned). Line 2 goes through the entire Shanghai from east to west, connecting two airports and a railway station, and it possesses a station inside the central plaza of NECC.

公交 Bus

- ① 865路：可驳接地铁上海动物园、漕河泾开发区、锦江乐园站；
- ② 797路、706路：可驳接地铁九亭站；
- ③ 776路：可驳接地铁紫藤路、中山公园站。

- ① Bus No. 865: Go to 3 Subway Stations of Shanghai Zoo, Caohejing Development Zone, and Jinjiang Amusement Park
- ② Bus No. 797, No. 706: Go to Jiuting Metro Station
- ③ Bus No. 776: Go to Ziteng Rd Metro Station, Zhongshan Park Metro Station

出租车/自驾 Taxi/Self-Driving

① 从上海市区：

From downtown Shanghai direction:

1、高架道路 / Elevated Road Line:

延安高架、南部外环高速方向，嘉闵高架-建虹高架-盈港东路-国家会展中心指定区域；

北翟高架、北部外环高速方向，嘉闵高架-崧泽高架-蟠龙路下匝道-龙联路-诸光路—国家会展中心指定区域。

From Yan'an Elevated Rd and the South of Outer Ring: Jiamin Elevated Rd – Jianhong Elevated Rd – East Yinggang Rd – the designated areas of NECC

From Beidi Elevated Rd and the North of Outer Ring: Jiamin Elevated Rd – Songze Elevated Rd – Panlong Rd Off-ramp – Longlian Rd – Zhuguang Rd – the designated areas of NECC

2、地面道路 / Ground Line:

北翟路 / 天山西路 / 仙霞西路方向，申长路或华翔路-崧泽大道-诸光路—国家会展中心指定区域；

延安路方向，延安西路-沪青平公路-诸光路—国家会展中心指定区域。

From Beidi Rd/West Tianshan Rd/West Xianxia Rd: Shenchang Rd/Huaxiang Rd – Songze Avenue – Zhuguang Rd – the designated areas of NECC

From Yan'an Rd: West Yan'an Rd – Huqingping Highway – Zhuguang Rd – the designated areas of NECC

② 从长三角：

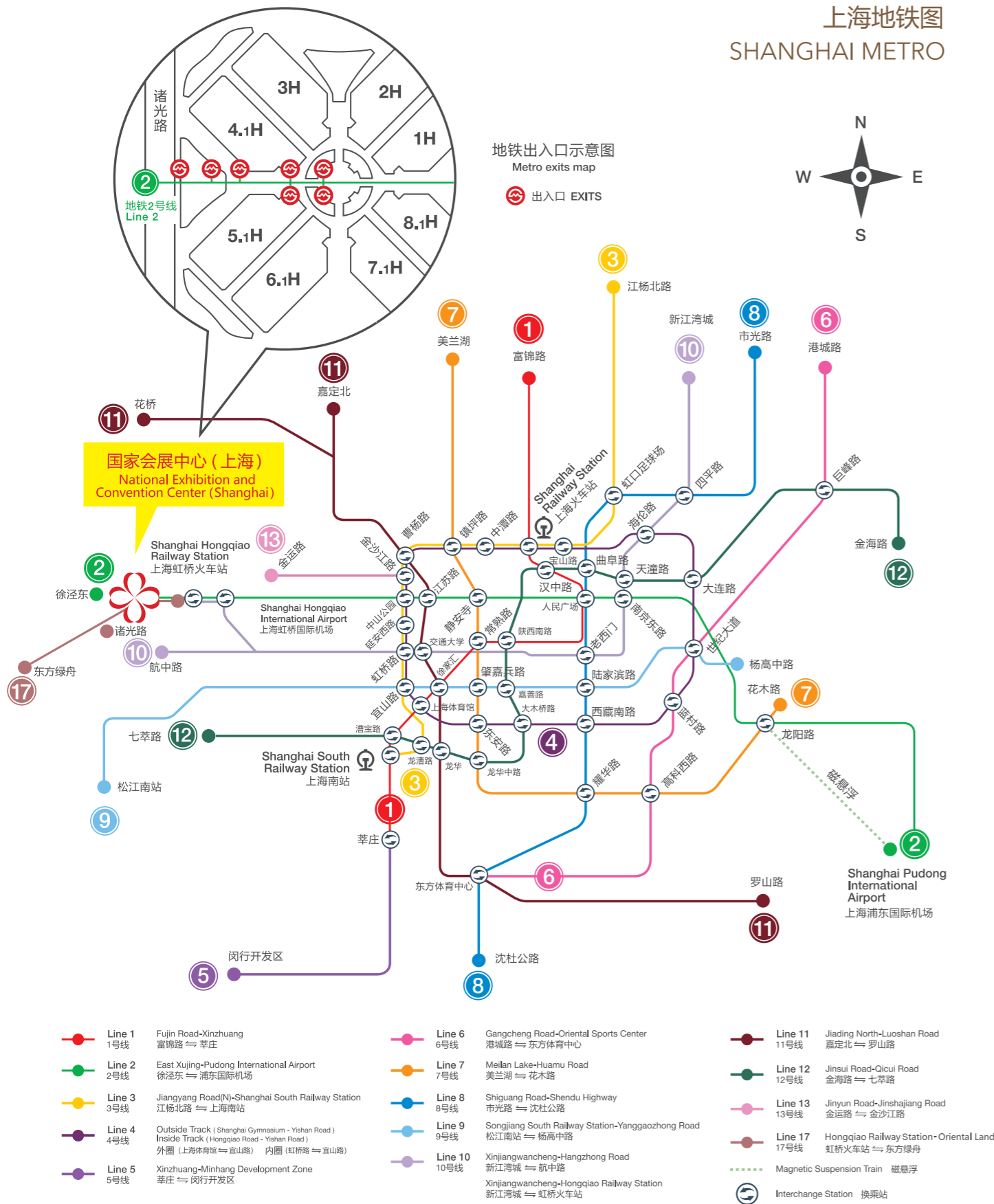
From Yangtze River Delta direction:

杭州、宁波、苏州方向客流可分别G60、G2等高速汇集至G15沈海高速-崧泽大道下匝道-崧泽大道—国家会展中心指定区域。或崧泽大道-诸光路-盈港东路-国家会展中心指定区域。

The passenger flow from Hangzhou, Ningbo, Suzhou can respectively come together from expressway G60, G2 and so on, to G15 Shenhai expressway- Songze Ave. off-ramp- Songze Ave.- the designated areas of NECC, or Songze Ave.- Zhuguang Rd.- East Yinggang Rd.- the designated areas of NECC .



上海地铁图
SHANGHAI METRO



公司简介 OVERVIEW

上海鸿达展览服务有限公司是东浩兰生会展集团上海外经贸商务展览有限公司下属全资子公司。公司成立于2000年7月，于2005年成为上海市会展行业协会会员单位。每年承接大型展会主场业务逾10个，合计管理面积近80万平方米；特装业务约3万平方米。

Shanghai Hongda Exhibition Service Co., Ltd. is a wholly-owned subsidiary of Donghao Lansheng Group Shanghai International Trade Promotion Co., Ltd.

The company was founded in July 2000 and became a member of the Shanghai Convention & Exhibition Industries Association in 2005.

Undertakes on-site operations of more than 10 large exhibitions every year with a total managed area of nearly 800,000 square meters and a special decoration area of more than 30,000 square meters.

主营业务 MAIN BUSINESS INCLUDES

各类展会的主场运营；总体布展规划、设计、搭建；展览、展示工程的管理；特装制作；配套保障服务等。

On-site operations of all kinds of exhibitions; overall exhibition planning, design and set-up; management of exhibition and display projects; special booth decoration; support services, etc.



<http://www.hongdaexpo.com>

上海鸿达展览服务有限公司
SHANGHAI HONGDA EXHIBITION SERVICE CO., LTD.

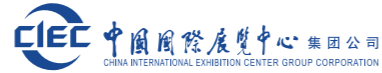
地址：上海市天目西路511号12楼

电话：021-66770662、66770663

国家会展中心(上海)A0-515室



微信服务号



上海依佩克国际运输有限公司

Shanghai ITPC International Transportation Co.,Ltd.

上海依佩克国际运输有限公司，系东浩兰生（集团）有限公司及中国国际展览中心集团合资的专业会展物流企业，公司每年承揽包括中国国际进口博览会、中国国际工业博览会等在内的境内外展览项目50余个。同时，公司作为国家会展中心（上海）和上海世博展览馆唯一的驻馆物流服务商，为参展的各家主承办单位、展商及各方提供了便捷、高效和极具性价比优势的物流服务。

Shanghai ITPC International Transportation Co.,Ltd. is a professional exhibition & convention logistics enterprise jointly established by DonghaoLansheng Group Limited Company and China International Exhibition Center Group Corporation.. The company annually undertakes more than 50 domestic and foreign exhibition projects including China International Import Expo and China International Industry Fair. As the sole on-site handling agent of NECC and SWEECC, we provide convenient, efficient and cost-effective logistics service to organizer, exhibitor and other party.

展会物流服务内容:

Exhibition Logistics Services

关务、仓储、监管、拆箱、现场就位、组装等展品全程物流链服务。

exhibit customs clearance, warehousing, supervision, exhibit unpacking, on-site placement, installation and other exhibit logistics chain services

展会物流服务保障:

Exhibition Logistics Service Guarantee:

高效、专业的通关团队；经验丰富的现场服务团队；充足完备的机力仓储资源。

efficient and professional customs clearance team, on-site operation service team with extensive operation experience, supporting warehousing and logistics team to provide customers with more considerate, comprehensive exhibition logistics services.

驻馆业务服务内容:

On-site Logistics Services

展品国内运输服务；铲车、登高机租赁服务；小件展品搬运服务。

Domestic return transport of exhibits; Forklift rental service; Rental service of lifting machine; Handling service for small exhibits.

驻馆业务服务保障:

On-site Logistics Service guarantee:

服务人员分级培训、全程监控；互联网+的业务委托和运营管理系统；防患于未然的应急保障机制。

Level-based training of service personnel, whole-process monitoring; implementation of Internet + service entrustment and operation information management; strict execution of operation process system; formulation of emergency response mechanism.



公司地址：上海市静安区光复路757号

五矿大厦10楼

<http://www.itpc.net.cn/>

会展业务总负责:

唐小卿 先生 86 138 0188 8953

Email: ken@itpc.net.cn

展运部:

顾方如 先生 86 186 0210 5358

Email: jake@itpc.net.cn

驻场部:

舒海华 先生 86 186 1698 8985

Email: shuhh@itpc.net.cn



Global presence

展览 EXHIBITIONS

EVENTS PLANNING 活动策划 / OPERATION 运营

PROJECT MANAGEMENT 项目管理

ADVERTISING 广告

INTERACTIVE SOLUTIONS 多媒体

DESIGN & BUILD 设计与搭建

EXHIBITS DISPLAY 展具



www.syma.com.cn

中国外运华东有限公司



中国外运华东有限公司（以下简称“华东公司”）是AAAAA级综合物流企业中国外运股份有限公司下属的区域公司。
华东公司作为央企下属的区域公司，总部位于上海，注册资本为11.2亿元人民币，年营业收入近300亿元，拥有下属企业238家，员工近10000人，下属业务机构遍及上海、浙江、江苏、安徽、江西、湖北、四川、重庆六省市。



238家 下属企业
近10,000人 企业员工
近300亿元 营业收入

华东公司致力于为国内外客户提供代理及相关业务、专业物流、电商业务三大业务板块具体包括货代、船代、长江内支线、合同物流、工程物流、会展物流、赛事物流、私人行李、电商物流、物流电商等细分类别的优质服务。依托中国外运在全球的服务网络，华东公司业务遍布全国和世界主要经济区域。



会展物流

2002年以来，华东公司为包括世博会、进博会在内的境内外六百多场展览会提供专业物流服务，并连续两年成为中国国际进口博览会的主场运输商之一，服务进博会展商超过1500家。

赛事物流

2004年以来，华东公司为包括F1、环球马术冠军赛、WTCC世界房车锦标赛、WEC世界耐力赛、大师杯赛、世界游泳锦标赛、法拉利挑战杯等高级别赛事提供专业物流服务。

私人行李

华东公司拥有“私人行李进出口业务经营权”，为客户提供上门包装、提货、出口清关、国际运输、目的地进口清关、送货、拆箱、摆放定位等一条龙服务。



SINOTRANS

华东公司会展物流分公司总经理：徐玮君，13701781916, xuweijun@sino-trans.com
华东公司会展物流分公司副总经理：李炯，18918781200, lijiong@sino-trans.com
展览业务：杜传坤，13901863852, duchuan-kun@sino-trans.com
赛事业务：陈云，13801921664, yun.zhen@sino-trans.com
私人行李业务：季诚，13601990560, jicheng@sino-trans.com



欣越货运

GO-EXPRESS CO.,LTD

■ 第一届、第二届中国国际进口博览会
— 主场物流承运服务商

■ 国际会展物流协会 (IELA)
— 正式成员

■ 上海会展行业协会
— 副会长单位

单项业务
150+



来展项目
60+



出展项目
200+



上海欣越国际货物运输代理有限公司有幸连续成功入围第一届、第二届中国国际进口博览会主场物流承运服务商。公司是经国家商务部批准的国际性物流企业，现任上海会展行业协会副会长单位，拥有国际国内展会物流服务承运的资质和能力，并拥有国际展品清关运输资质及国内一级货运代理资质；公司拥有高、中级会展师职称4人，在展运物流行业20余年。该公司是一支以优秀党员、市劳动模范、高学历人员等业务骨干为核心，储备各类专业人才为基础的队伍，团队规模接近百人。下设各级子公司及办事处分布上海、北京、广州、成都、深圳、香港等地。

公司是现任国际会展物流协会 (IELA) 正式成员，该组织在世界范围内拥有完整服务网络，覆盖面积遍布全球。拥有多达五十多家全球优质合作代理，专业解决精品、展品等高端物流方案，包括海内外论坛会议，展览会，体育赛事，世界巡展，各种技术、艺术交流会，节庆活动等。自公司成立至今，在展品运输方面积累的丰富的经验，每年服务近60个来展项目，200余个海外出展项目，其他单项业务150余个，为展商制定并落实门到门点对点物流方案。

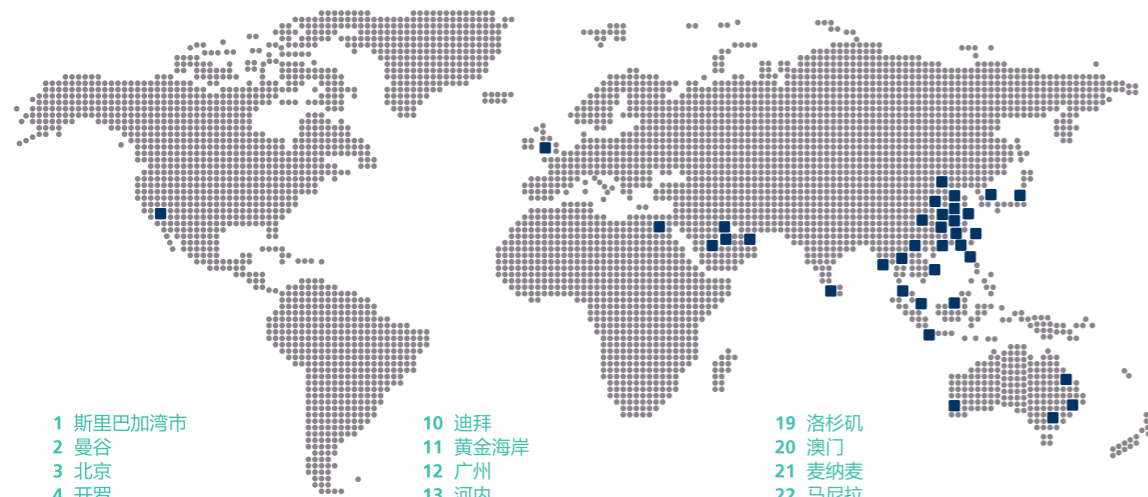
上海欣越国际货物运输代理有限公司有实力为主办方或承办方提供优质的全程物流服务。

地址：上海市四平路277号17楼CD座
电话：86 21 65757706

邮编：200081
网址：www.go-express.com



TOTAL BRAND ACTIVATION



- | | | | |
|----------|---------|--------|--------|
| 1 斯里巴加湾市 | 10 迪拜 | 19 洛杉矶 | 28 深圳 |
| 2 曼谷 | 11 黄金海岸 | 20 澳门 | 29 新加坡 |
| 3 北京 | 12 广州 | 21 麦纳麦 | 30 悉尼 |
| 4 开罗 | 13 河内 | 22 马尼拉 | 31 台北 |
| 5 郴州 | 14 胡志明市 | 23 墨尔本 | 32 东京 |
| 6 重庆 | 15 香港 | 24 珀斯 | 33 武汉 |
| 7 科伦坡 | 16 雅加达 | 25 利雅得 | 34 西安 |
| 8 多哈 | 17 吉隆坡 | 26 首尔 | 35 仰光 |
| 9 东莞 | 18 伦敦 | 27 上海 | 36 郑州 |

Official Show Management

主场运营

Event

活动

Museum & Show Room

博物馆及展厅

Exhibition

展览展示

北京笔克展览展示有限公司 BEIJING PICO EXHIBITION MANAGEMENT CO., LTD.

香港交易所股票代码: 752

北京市顺义区顺兴路3号笔克创意中心
邮编101300

Beijing Pico Exhibition Management Co., Ltd.
Pico Creative Center, 3 Shunxing Road, Shunyi
District, Beijing 101300, China

电话: 010-8941 4377

传真: 010-6491 6591

邮箱: bj.info@pico.com

网址: www.pico.com



笔克是行业领先的会展活动跨国企业, 半世纪以来凭卓越往绩誉满全球。

北京笔克是集团内最大的机构, 在北京的规模以上展会中, 由北京笔克负责主场运营管理的市场占有率近三分之一, 2019年北京笔克全年主场面积达170万平方米。

提升专业观众的用户体验

- 会议: 提供个性化参会体验
- 展览: 使用便捷、有价值的服务吸引专业观众使用数字平台

提升参展双方的连接效率

提升展商商机孵化效率



致行营销

专注于线下场景, 利用科技和数据,
提升用户体验和展商营销效率。



扫描获得完整方案

电话: 18618414469
E-mail: infor@actionone.cn



微信公众平台
WeChat Official Platform



官方网站
Official Website



北京: +86 10 65671880 上海: +86 21 52377388 深圳: +86 755 82782877 香港: +00 852 23697668

值得信赖的全球性展览公司

Your reliable globalized exhibition partner

www.orientalexpo.cn



深圳澳腾益展览展示策划有限公司
Aotengyi Shenzhen Aotengyi Exhibition Display Planning Co., Ltd.

澳腾益展览

是一家专注会展服务的公司。为客户提供会展主场服务、会议执行、展览设计及搭建等服务工作。

运用高效的信息化管理和多年会展服务的市场经验, 以及实施配备优良的展览制作工厂, 专业的施工团队, 精湛的施工工艺, 为市场提供全方位的服务。

深圳市南山区龙珠大道40号梅州大厦1305-1312房

0755-86094427 0755-86097030 414314949

bairan95@163.com http://www.atyzi.com



经典系列

Classic series



邮政系列

Postal series



优品系列

Daily series

• 服饰类
Clothing



• 文具类
Stationery



• 家居类
Furnishing

• 徽章类
Badges

产品介绍

*图片仅供参考，以实物为准。
Pictures only supply the reference, the final details depend on real products.



传说找到四叶草的几率只有十万分之一，若能找到就能带来好运。

辗转流传，四叶草已被国际公认为幸运的象征。从空中俯瞰，国家会展中心（上海）整体建筑就如一株巨型四叶草，在申城蓬勃绽放。

她正使用四叶草这一“世界通行语”祈福世界，向各方宾客传递东道主对会展业欣欣向荣、传播文明、拓展市场、广结四海的美好意愿。

来这里，可以观摩全球瞩目的展览盛会；
来这里，可以体验商业、办公、酒店、会议的和谐共融；
现在，来这里，你也许还能寻找到值得珍藏的“幸运四叶草”和你的国展记忆！

It is said that the probability of finding a four-leaf clover is 1-in-a-100,000. Four-leaf clovers are believed to bring good luck to those fortunate enough to stumble upon them. They are now considered a symbol of luck globally. When seen from above, NECC looks like a giant four-leaf clover unfolding vibrantly in Shanghai.

NECC uses the four-leaf clover as a global symbol to bring together the world.

As a host, it sends good wishes for the thriving conference and exhibition industry, to guests from all over the world, and hopes to spread civilization, and promote business expansion and cooperation.

At NECC, you can witness globally influential exhibitions. At NECC, you can experience the perfect combination of commerce, offices, hotels and conventions. Who knows, you may just find a "lucky four-leaf clover" and enjoy an experience worth cherishing a lifetime. Welcome to NECC!



国展微信号
WeChat Subscription
Account of NECC



进博会微信号
WeChat Subscription
Account of CIIE



上海海展广告工程有限公司
SHANGHAI HIGH-FAIR ADVERTISING & ENGINEERING CO., LTD.

Shanghai High-Fair Advertising & Engineering Co., Ltd.

国展中心

- 广告服务运营商
- 吊点服务运营商
- 展览配电服务商

会展品牌整体解决方案提供商

A turn-key solution provider for the exhibition industry

- 会展策划
- 会展传媒
- 会展视觉
- 会展服务
- 会展工程



www.cantonfairad.com

隶属中国对外贸易中心（集团）/ 广州交易会广告有限公司

地址：上海市青浦区徐泾镇诸光路1988号 国家会展中心（上海）3号馆3楼 / 电话：13922251667 13922249245